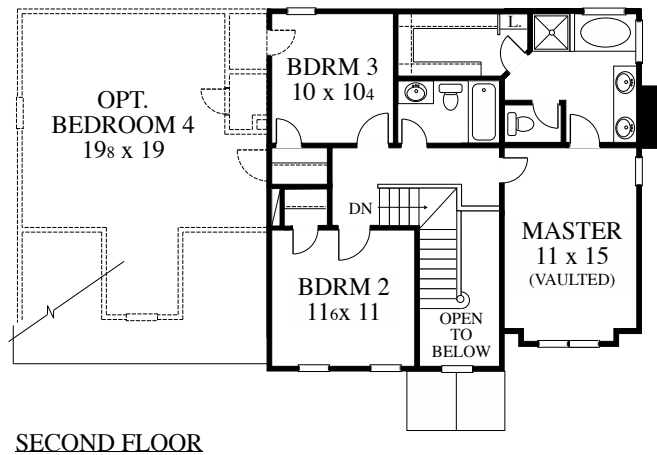
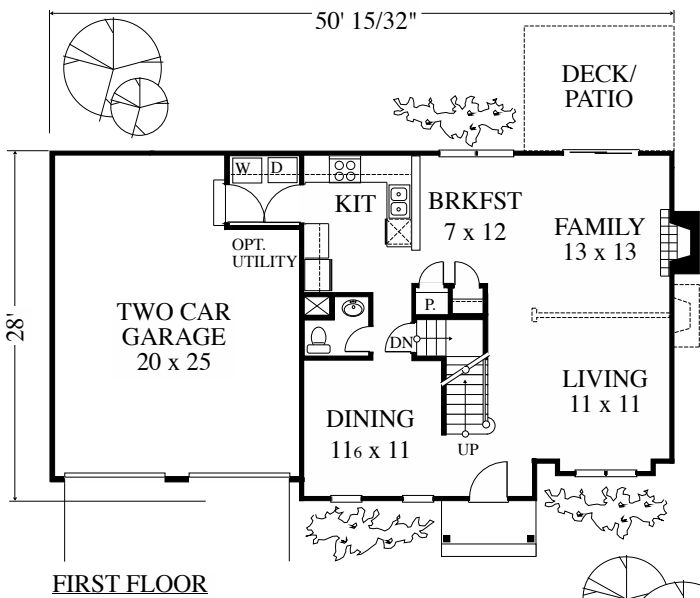
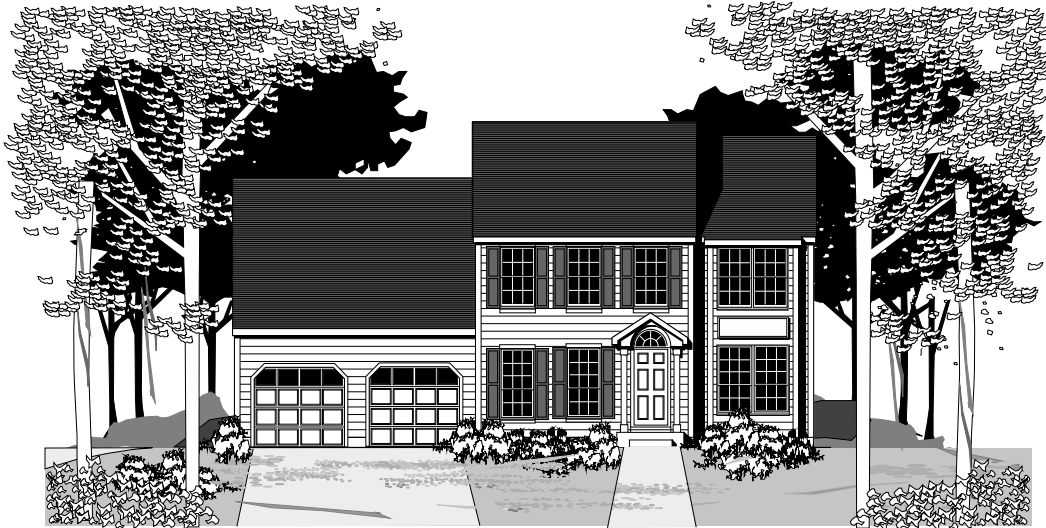


# SMALL SINGLE



Copyright 2009 by James Wentling/Architects

20-06 G THE LANCASTER

1,563 SQ FT

This compact plan offers a three bedroom, 2-1/2 bath home in 1,563 SF. The first floor is designed to offer either a large great room or separate living and family areas. Upstairs, the turned stair and hall overlook a two-story foyer below. An optional fourth bedroom can be added over the garage. This plan is documented with a basement foundation.

PRICE B

JAMES WENTLING / ARCHITECTS

PRICE B

Plan Library Service