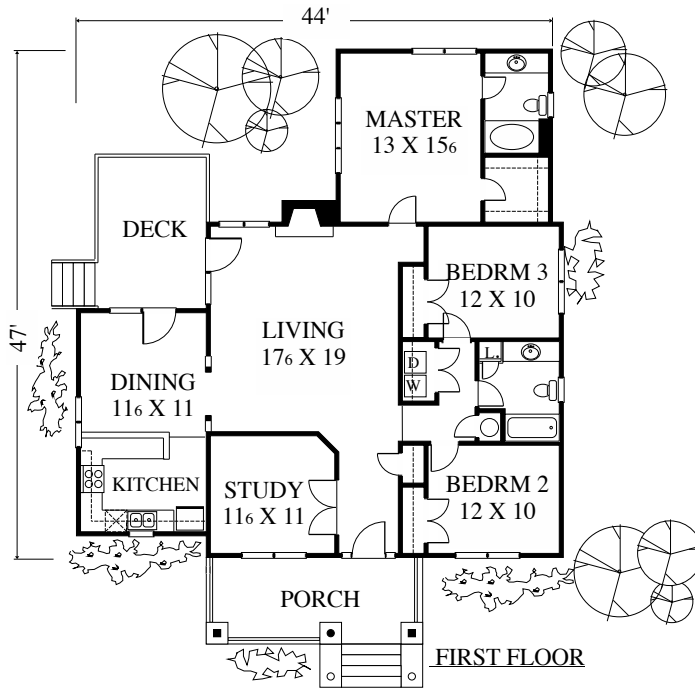


AWARD WINNER



Copyright 1995 by James Wentling/Architects

58-01 A

THE RANCH STUDY

1595 SQ FT

This craftsman style ranch home features an informal plan for relaxed living. A small study off the foyer can serve as a home office with three other bedrooms available as well. The large living serves as the main room of the home, while the kitchen / dining function functions as a workable place for meals. The plan can easily accomodate an attached garage at the side or in the rear portion of the lot. The plan is documented with a crawl foundation.

PRICE B

JAMES WENTLING / ARCHITECTS

PRICE B